



PM Series

PM Series | Video Broscope Multifunctionality Videoscope

Features Introduction PM series video broscope



Feature Function

- 3.5" TFT LCD
- Snap shot and Audio / Video recording (640 * 480)
- Snap shot While Recording
- LED brightness adjustment
- 2X Zoom in and Image rotation
- Photo Comparison function
- USB to PC connection
- AV OUT



Standard Accessories



Basic Cleaning Kit



8G SD Card



Video Cable



USB Cable



Charger

Application

- Automobiles • Aircrafts • Ships • Railways • Welding • Architecture
- Mechanical equipment • Generators • Electricity • Manufacture
- General equipment • Gas, petroleum, and chemicals
- Defense, security, and surveillance
- Exploration, education, and research and experiments.



Video Output

Recorded video & images can be displayed directly to a TV screen for large screen viewing. Support " PAL " / " NTSC " video system.



USB Connection

PM Series is capable to transfer captured images and view from PC. Support Windows 2000™ or later version. No specific software is required to palyback the JPG and ASF files.



Measure Software Kit (Optional)

Inspection Management Software is designed for image viewing, distance measuring, and image comparison. It helps inspectors to verify measurement after leaving the inspection site.



3.5" TFT LCD Display

Embedded with a 3.5" TFT LCD Monitor provides superior image quality photos for inspector to see.



2.0X Zoom - In

A magnifying function operates in camera mode. Simply click on magnifying glasses \oplus \ominus button.

Support up to 2X Digital Zoom.



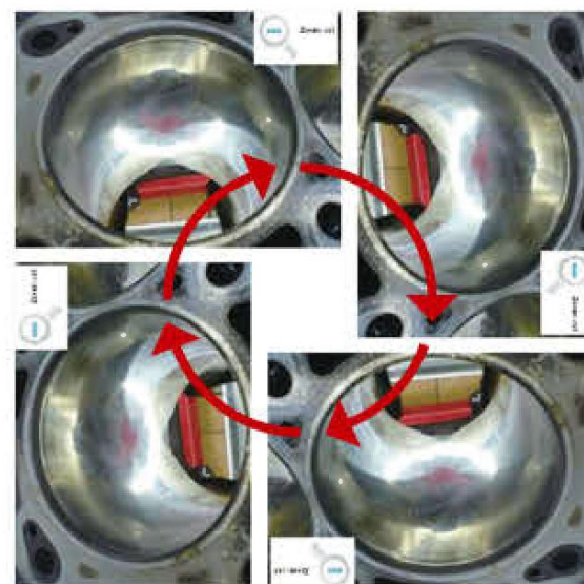
Photo Comparison

A build-in photo comparison function allows user to see the difference of 2 photos at inspection site without using computer software.



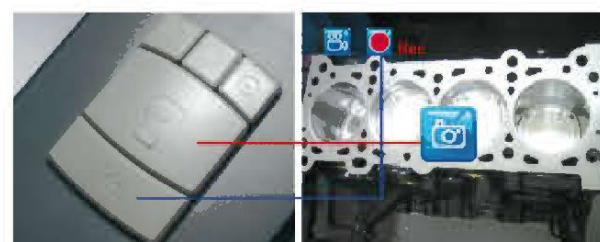
Screen Image Rotation Ability Image Rotation

Features image rotation allowing user to turn image into four directions 90°, 180°, 270° and 360°. No need to adjust camera probe anymore.



Snap-shot While Recording

SWR function allows user to take photo while recording or replaying video. Never miss any important moments again.



Tripod Mount & Magnetic Stripes

PM Series features a tripod mount and strong Magnetic Stripes that allows for convenient use purpose.



Main Console System (Display)	
Display	3.5" TFT LCD QGVA
Power	Battery rechargeable Li-ion battery 3.7V Power supply AC100-240V 47-63Hz Power consumption DC 5V 2.5A
Interface	USB.2 0 / AV Out
Video out Format	NTSC & PAL
Storage	8 GB SD card (up to 32 GB)
Compression Format	MPEG4
Image Storage Format	JPEG (640 * 480)
Video Recording Format	ASF (640 * 480)
Frame Rate	~30 fps
S/N Rate	42dB or more
Exposure	Automatic
White Balance	Fix
Working temperature	-10°C ~ 50°C
Working Hours	Up to 5 Hours
Languages	26 Languages: English / French / German / Italian / Spanish / Portuguese / Japanese / Traditional Chinese / Simplified Chinese / Danish / Dutch / Polish / Russian / Turkish / Swedish / Finnish / Croatian / Czech / Greek / Arabic / Korean / Malay / Hindi / Vietnamese / Thai / Indonesian
Dimension	215 * 115 * 35mm
Weight	430g (0.95 lb)

Insertion Probe Options

Probe	Material	Probe Diameter	Tube Length	Detail
General Probe	Soft-Metal	Φ 3.9 mm / Φ 5.5 mm	1m / 2m / 3m / 5m / 10m / 20m / 30m	P. 43 - 44
General Probe	Semi-Rigid	Φ 3.9 mm / Φ 5.5 mm	1m / 2m / 3m / 5m / 10m / 20m / 30m	P. 43 - 44
VGA Probe	Soft-Metal	Φ 5.5 mm / Φ 6 mm / Φ 8 mm Φ 10 mm / Φ 25 mm / Φ 28 mm Φ 30 mm	1m / 2m / 3m / 5m / 10m / 20m / 30m	P. 43 - 44
VGA Probe	Semi-Rigid	Φ 5.5 mm / Φ 6 mm / Φ 8 mm Φ 10 mm / Φ 25 mm / Φ 28 mm Φ 30 mm	1m / 2m / 3m / 5m / 10m / 20m / 30m	P. 43 - 44
2 Way Articulation	Soft-Metal	Φ 3.9 mm / Φ 6 mm	1m / 2m / 3m	P. 45
2 Way Articulation (VGA)	Soft-Metal	Φ 6 mm	1m / 2m / 3m / 4m / 5m / 6m	P. 45
4 Way Articulation (VGA)	Soft-Metal	Φ 6 mm / Φ 7.5 mm	1m / 2m / 3m	P. 46



General Probe

Specification Introduction



Φ 3.9 mm Probe
(Soft-Metal / Semi-Rigid)

1m / 2m / 3m / 5m / 10m / 20m

Φ 5.5 mm Probe
(VGA / QVGA)

(Soft-Metal / Semi-Rigid)
(Short Foucs / Long Foucs)

1m / 2m / 3m / 5m / 10m / 20m / 30m

Φ 6 mm VGA Probe
(Soft-Metal / Semi-Rigid)
(Short Foucs / Long Foucs)

1m / 2m / 3m / 5m / 10m

Φ 6 mm Probe
30° Side view

(Soft-Metal / Semi-Rigid)

1m / 2m / 3m / 5m / 10m / 20m / 30m

Φ 6 mm Probe
90° Side view

(Soft-Metal / Semi-Rigid)

1m / 2m / 3m / 5m / 10m
20m / 30m



Φ 30 mm VGA Probe
(Soft-Metal / Semi-Rigid)

1m / 2m / 3m / 5m / 10m / 20m / 30m



Φ 28 mm VGA Probe
(Soft-Metal / Semi-Rigid)

1m / 2m / 3m / 5m / 10m / 20m / 30m



Φ 25 mm VGA Probe
(Soft-Metal / Semi-Rigid)

1m / 2m / 3m / 5m / 10m / 20m / 30m



Φ 10 mm VGA Probe
(Soft-Metal / Semi-Rigid)
(Short Foucs / Long Foucs)

1m / 2m / 3m / 5m / 10m



Φ 8 mm VGA Probe
(Soft-metal / Semi-rigid)
(Short Foucs / Long Foucs)

1m / 2m / 3m / 5m / 10m



PM Series



PG Series



PR Series

Insertion tube & Camera System			
Diameter	Φ 3.9 mm	Φ 5.5 mm	Φ 6 mm
Material	Soft-Metal / Semi-Rigid		
Type of Camera	Front view (F.V)		Front view (F.V) Side view (S.V) 30° / 90°
Length	1m / 2m / 3m / 5m 10m / 20m	1m / 2m / 3m / 5m 10m / 20m / 30m	F.V : 1m / 2m / 3m / 5m / 10m S.V : 1m / 2m / 3m / 5m / 10m 20m / 30m
Resolution Pixels (Dynamic / Static)	QVGA (320 * 240)	QVGA (320 * 240) VGA (640 * 480)	F.V : VGA (640 * 480) S.V : QVGA (320 * 240)
Available Focus	S.F 2 ~ 6 cm	S.F 2 ~ 6 cm L.F 6 cm above	F.V : S.F 2 ~ 6 cm / L.F 6 cm above S.V : S.F 2 ~ 6 cm
Available Infrared	None		
Main Console	PM Series, PG Series, PR Series, PA Series		

S.F = Short Foucs, L.F = Long Foucs

Insertion tube & Camera System					
Diameter	Φ 30 mm	Φ 28 mm	Φ 25 mm	Φ 10 mm	Φ 8 mm
Material	Soft-Metal / Semi-Rigid				
Type of Camera	Front view				
Length	1m / 2m / 3m / 5m / 10m / 20m / 30m			1m / 2m / 3m / 5m / 10m	
Resolution Pixels (Dynamic / Static)	VGA (640 * 480)				
Available Focus	L.F : 6 cm above			S.F : 2 ~ 6 cm L.F : 6 cm above	
Available Infrared	YES			None	
Main Console	PM Series,	PG Series,	PR Series,	PA Series	

S.F = Short Foucs, L.F = Long Foucs

2 Way Articulation



2 WAY ARTICULATION

2 way articulation probe helping to check angles that hardly can be checked easily (over 270° of view).



Left / Right 135°



Φ 3.9 mm QVGA
2 Way Articulation Probe

1m / 2m / 3m

Φ 6 mm (QVGA / VGA)
2 Way Articulation Probe
(Short Foucs / Long Foucs)

QVGA : 1m / 2m / 3m

VGA : 1m / 2m / 3m / 4m / 5m / 6m



PM Series



PG Series



PR Series

Insertion tube & Camera System			
Diameter	Φ 3.9 mm	Φ 6 mm	Φ 6 mm
Material	Soft-Metal		
Head Length	28mm	16mm	23mm
Length	1m / 2m / 3m		1m / 2m / 3m / 4m / 5m / 6m
Resolution Pixels (Dynamic / Static)	QVGA (320 * 240)		VGA (720 * 525)
F.O.V	56°		65°
D.O.F	S.F 2 - 6 cm		S.F 2 - 6 cm L.F 6 cm above
Working Temperature	0 °C ~ 80 °C		
Waterproof	IP 67		
Light Source	White LED * 4		
Articulating Angle	Left : 135° / Right: 135°		
Main Console	PM Series,	PG Series,s	PR Series, PA Series

S.F = Short Foucs, L.F = Long Foucs

4 Way Articulation



4 WAY ARTICULATION

4 way articulation probe helping to check angles that hardly can be checked easily.



Left / Right / Up / Down 135° at each side



Φ 6 mm / Φ 7.5 mm VGA
4 Way Articulation Probe
(Short Foucs / Long Foucs)

1m / 2m / 3m



PM Series



PG Series



PR Series

Insertion tube & Camera System		
Diameter	Φ 6 mm	Φ 7.5 mm
Material	Soft-Metal	
Head Length	23mm	33mm
Length	1m / 2m	1m / 2m / 3m
Resolution Pixels (Dynamic / Static)	VGA (720 * 525)	VGA (640 * 480)
F.O.V	65°	
D.O.F	S.F 2 - 6 cm L.F 6 cm above	
Working Temperature	0 °C ~ 80 °C	
Waterproof	IP 67	
Light Source	White LED * 4	White LED * 8
Articulating Angle	Left, Right, Up, Down : 135°	
Main Console	PM Series,	PG Series,s PR Series, PA Series

S.F = Short Foucs, L.F = Long Foucs