

# PR Series

## PR Series | Video Broscope Multifunctional Wireless Videoscope

## Features Introduction PR series video broscope



### Feature Function

- 5" TFT LCD ( 800 \* 480 )
- Wireless Transmission
- Snap shot and Audi / Video recording (640 \* 480)
- Snap shot While Recording
- LED brightness adjustment
- 2X Zoom in and Image rotation
- Photo Comparison function
- USB to PC connection
- AV OUT



### Standard Accessories



### Application

- Automobiles • Aircrafts • Ships • Railways • Welding • Architecture
- Mechanical equipment • Generators • Electricity • Manufacture
- General equipment • Gas, petroleum, and chemicals
- Defense, security, and surveillance
- Exploration, education, and research and experiments.



### Video Output

Recorded video & images can be displayed directly to a TV screen for large screen viewing. Support " PAL " / " NTSC " video system.



### Measure Software Kit (Optional)

Inspection Management Software is designed for image viewing, distance measuring, and image comparison. It helps inspectors to verify measurement after leaving the inspection site.



### USB Connection

PR Series is capable to transfer captured images and view from PC. Support Windows 2000™ or later version. No specific software is required to palyback the JPG and ASF files.



### 5" TFT LCD Display

Embedded with a 3.5" TFT LCD Monitor provides superior image quality photos for inspector to see.



### 2.0X Zoom - In

Support up to 2X Digital Zoom.



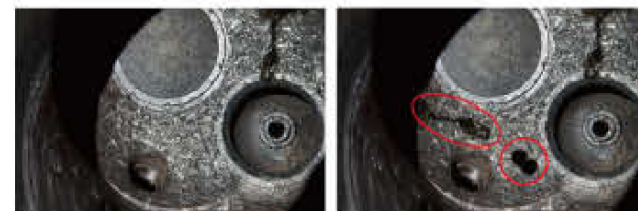
### Wired Mode

PR Series can be worked as wired mode - simply insert the console to the connector located on the top of the system.



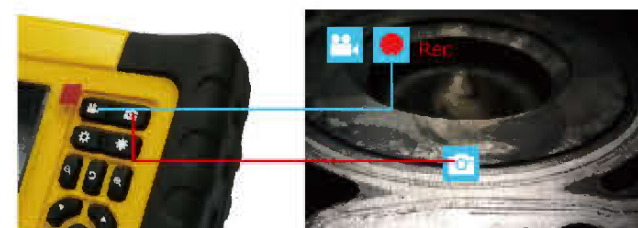
### Photo Comparison

A build-in photo comparison function allows user to see the difference of 2 photos at inspection site without using computer software.



### Snap-shot While Recording

SWR function allows user to take photo while recording or replaying video. Never miss any important moments again.



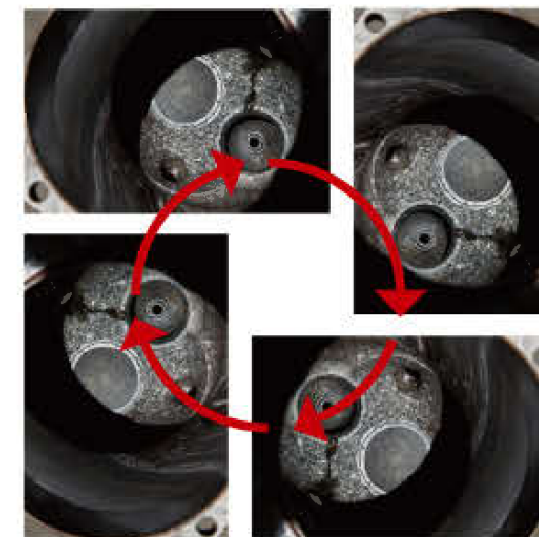
### Wireless Mode

PR Series Using RF 2.4GHz wireless frequency effective distance 30M (Open Accessible Environment).



### Screen Image Rotation Ability Image Rotation

Features image rotation allowing user to turn image into four directions 90°, 180°, 270° and 360°. No need to adjust camera probe anymore.



Main Console System ( Display )	
Display	5" TFT LCD ( 800 * 480 )
Power	Rechargeable Li-Polymer Battery 3.7V Power supply AC100-240V, 47-63Hz Power consumption DC 5V, 2.5A
Interface	Mini USB 1.1/ AV out
Video Out Format	NTSC & PAL
Storage	8 GB SD card (up to 32GB)
Compression Format	MPEG4
Image Storage Format	JPEG (640 * 480)
Video Recording Format	ASF (640 * 480)
Frame Rate	~30 fps
S/N Rate	42dB or more
Exposure	Automatic
White Balance	Fix
Working Temperature	-20 ~ 60°C
Working Hours	Up to 3.5 hours
Languages	26 Languages: English / French / German / Italian / Spanish / Portuguese / Japanese / Traditional Chinese / Simplified Chinese / Danish / Dutch / Polish / Russian / Turkish / Swedish / Finnish / Croatian / Czech / Greek / Arabic / Korean / Malay / Hindi / Vietnamese / Thai / Indonesian /
Wireless Frequency	RF 2.4GH -87dBm(SNR=42dB, Fmod=15kHz)
Dimension	200 * 130 * 65mm
Weight	0.43kg ( 0.95 lb)

### Insertion Probe Options

Probe	Material	Probe Diameter	Tube Length	Detail
General Probe	Soft-Metal	Φ 3.9 mm / Φ 5.5 mm	1m / 2m / 3m / 5m / 10m / 20m / 30m	P.43 - 44
General Probe	Semi-Rigid	Φ 3.9 mm / Φ 5.5 mm	1m / 2m / 3m / 5m / 10m / 20m / 30m	P.43 - 44
VGA Probe	Soft-Metal	Φ 5.5 mm / Φ 6 mm / Φ 8 mm Φ 10 mm / Φ 25 mm / Φ 28 mm Φ 30 mm	1m / 2m / 3m / 5m / 10m / 20m / 30m	P.43 - 44
VGA Probe	Semi-Rigid	Φ 5.5 mm / Φ 6 mm / Φ 8 mm Φ 10 mm / Φ 25 mm / Φ 28 mm Φ 30 mm	1m / 2m / 3m / 5m / 10m / 20m / 30m	P.43 - 44
2 Way Articulation	Soft-Metal	Φ 3.9 mm / Φ 6 mm	1m / 2m / 3m	P.45
2 Way Articulation (VGA)	Soft-Metal	Φ 6 mm	1m / 2m / 3m / 4m / 5m / 6m	P.45
4 Way Articulation (VGA)	Soft-Metal	Φ 6 mm / Φ 7.5 mm	1m / 2m / 3m	P.46



# General Probe

## Specification Introduction



**Φ 3.9 mm Probe**  
( Soft-Metal / Semi-Rigid )  
1m / 2m / 3m / 5m / 10m / 20m

**Φ 5.5 mm Probe**  
( VGA / QVGA )  
( Soft-Metal / Semi-Rigid )  
( Short Foucs / Long Foucs )  
1m / 2m / 3m / 5m / 10m / 20m / 30m

**Φ 6 mm VGA Probe**  
( Soft-Metal / Semi-Rigid )  
( Short Foucs / Long Foucs )  
1m / 2m / 3m / 5m / 10m

**Φ 6 mm Probe**  
30° Side view  
( Soft-Metal / Semi-Rigid )  
1m / 2m / 3m / 5m / 10m / 20m / 30m

**Φ 6 mm Probe**  
90° Side view  
( Soft-Metal / Semi-Rigid )  
1m / 2m / 3m / 5m / 10m / 20m / 30m



**Φ 30 mm VGA Probe**  
( Soft-Metal / Semi-Rigid )  
1m / 2m / 3m / 5m / 10m / 20m / 30m

**Φ 28 mm VGA Probe**  
( Soft-Metal / Semi-Rigid )  
1m / 2m / 3m / 5m / 10m / 20m / 30m

**Φ 25 mm VGA Probe**  
( Soft-Metal / Semi-Rigid )  
1m / 2m / 3m / 5m / 10m / 20m / 30m

**Φ 10 mm VGA Probe**  
( Soft-Metal / Semi-Rigid )  
( Short Foucs / Long Foucs )  
1m / 2m / 3m / 5m / 10m

**Φ 8 mm VGA Probe**  
( Soft-metal / Semi-rigid )  
( Short Foucs / Long Foucs )  
1m / 2m / 3m / 5m / 10m



PM Series



PG Series



PR Series

Insertion tube & Camera System			
Diameter	Φ 3.9 mm	Φ 5.5 mm	Φ 6 mm
Material	Soft-Metal / Semi-Rigid		
Type of Camera	Front view ( F.V )		Front view ( F.V ) Side view ( S.V ) 30° / 90°
Length	1m / 2m / 3m / 5m / 10m / 20m	1m / 2m / 3m / 5m / 10m / 20m / 30m	F.V : 1m / 2m / 3m / 5m / 10m S.V : 1m / 2m / 3m / 5m / 10m / 20m / 30m
Resolution Pixels ( Dynamic / Static )	QVGA ( 320 * 240 )	QVGA ( 320 * 240 ) VGA ( 640 * 480 )	F.V : VGA ( 640 * 480 ) S.V : QVGA ( 320 * 240 )
Available Focus	S.F 2 ~ 6 cm	S.F 2 ~ 6 cm L.F 6 cm above	F.V : S.F 2 ~ 6 cm / L.F 6 cm above S.V : S.F 2 ~ 6 cm
Available Infrared	None		
Main Console	PM Series, PG Series, PR Series, PA Series		

S.F = Short Foucs, L.F = Long Foucs

Insertion tube & Camera System					
Diameter	Φ 30 mm	Φ 28 mm	Φ 25 mm	Φ 10 mm	Φ 8 mm
Material	Soft-Metal / Semi-Rigid				
Type of Camera	Front view				
Length	1m / 2m / 3m / 5m / 10m / 20m / 30m			1m / 2m / 3m / 5m / 10m	
Resolution Pixels ( Dynamic / Static )	VGA ( 640 * 480 )				
Available Focus	L.F : 6 cm above			S.F : 2 ~ 6 cm L.F : 6 cm above	
Available Infrared	YES			None	
Main Console	PM Series, PG Series, PR Series, PA Series				

S.F = Short Foucs, L.F = Long Foucs

## 2 Way Articulation



### 2 WAY ARTICULATION

2 way articulation probe helping to check angles that hardly can be checked easily (over 270° of view).



Left / Right 135°



Φ 3.9 mm QVGA  
2 Way Articulation Probe

1m / 2m / 3m

Φ 6 mm ( QVGA / VGA )  
2 Way Articulation Probe  
( Short Foucs / Long Foucs )

QVGA : 1m / 2m / 3m

VGA : 1m / 2m / 3m / 4m / 5m / 6m



PM Series



PG Series



PR Series

Insertion tube & Camera System			
Diameter	Φ 3.9 mm	Φ 6 mm	Φ 6 mm
Material	Soft-Metal		
Head Length	28mm	16mm	23mm
Length	1m / 2m / 3m		1m / 2m / 3m / 4m / 5m / 6m
Resolution Pixels ( Dynamic / Static )	QVGA ( 320 * 240 )		VGA ( 720 * 525 )
F.O.V	56°		65°
D.O.F	S.F 2 - 6 cm		S.F 2 - 6 cm L.F 6 cm above
Working Temperature	0 °C ~ 80 °C		
Waterproof	IP 67		
Light Source	White LED * 4		
Articulating Angle	Left : 135° / Right: 135°		
Main Console	PM Series,	PG Series,s	PR Series, PA Series

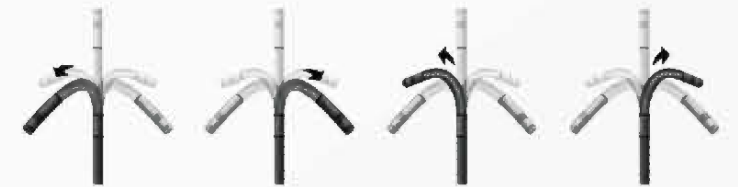
S.F = Short Foucs, L.F = Long Foucs

## 4 Way Articulation



### 4 WAY ARTICULATION

4 way articulation probe helping to check angles that hardly can be checked easily.



Left / Right / Up / Down 135° at each side



Φ 6 mm / Φ 7.5 mm VGA  
4 Way Articulation Probe  
( Short Foucs / Long Foucs )

1m / 2m / 3m



PM Series



PG Series



PR Series

Insertion tube & Camera System		
Diameter	Φ 6 mm	Φ 7.5 mm
Material	Soft-Metal	
Head Length	23mm	33mm
Length	1m / 2m	1m / 2m / 3m
Resolution Pixels ( Dynamic / Static )	VGA ( 720 * 525 )	VGA ( 640 * 480 )
F.O.V	65°	
D.O.F	S.F 2 - 6 cm L.F 6 cm above	
Working Temperature	0 °C ~ 80 °C	
Waterproof	IP 67	
Light Source	White LED * 4	White LED * 8
Articulating Angle	Left, Right, Up, Down : 135°	
Main Console	PM Series,	PG Series,s PR Series, PA Series

S.F = Short Foucs, L.F = Long Foucs