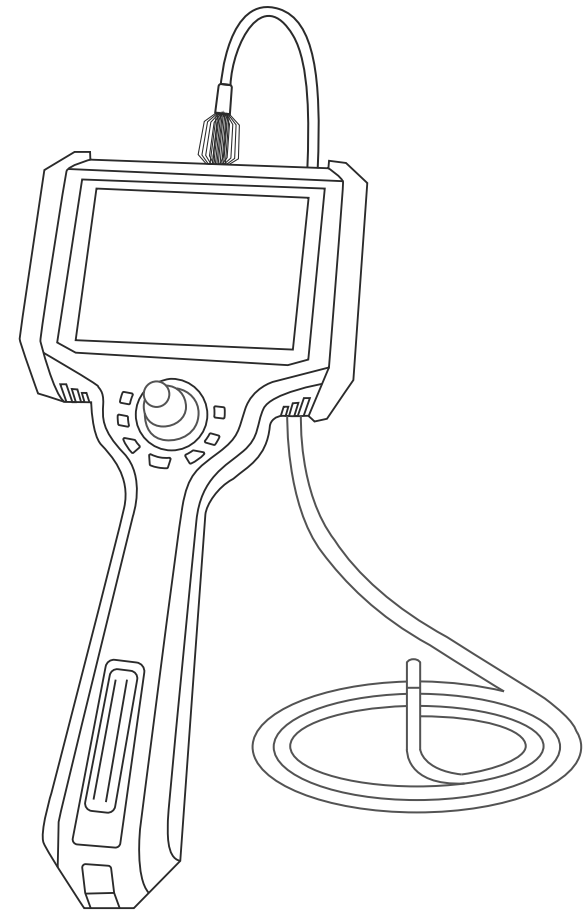


industrial videoscope

instruction manual



Warning: Please read the instruction manual before use

Copyright announcement

This manual applies to industrial video endoscope series products, the copyright belongs to our company, this specification and any information contained therein shall not be provided to any person without the written consent of the company any material to be copied, copied or translated into another language. We will hold those who violate the law accountable.

Warning:

Due to the continuous update of product technology, the market changes rapidly, and the editing time is limited, there is no guarantee that it is not included in this manual there are errors, so this manual is only for the reference of the user, do not provide any form of warranty. Our company reserves the right the content of this article is revised and changed right. The company has no obligation or obligation to notify any of the amendments.

- 1、 User Instructions**
 - 1.1 Application and scope of application 01
 - 1.2 Maintenance and modification 01
 - 1.3 Safety precautions 01

- 2、 Introduction of Industrial borescope Products**
 - 2.1 System parameters 02
 - 2.2 Operating environment 03
 - 2.3 Packing list 03

- 3 、 Operation process** 04

- 4、 Instructions**
 - 4.1 Preparation before startup 04
 - 4.2 Bending control 04
 - 4.2.1 Key, interface introduction 05
 - 4.3 Storage/Video 07
 - 4.4 Instrument Observation Mode Quick Start Guide 08

- 5、 Turn off** 15

- 6、 Instrument storage mode** 15

- 7、 Troubleshooting** 15

1. User Instructions

1.1 Purpose and scope of application

This product is applied to the real-time detection and analysis of industrial field equipment and automobile production and maintenance, with direct visual features. Point, can directly observe whether there are defects or abnormalities on the inner surface of pipes, turbines, cylinders, engines and other devices. The other in Real-time photography and video recording are performed to provide indispensable data collection for analyzing equipment usage and equipment production guarantee Set.

1.2 Purpose and scope of application

This product does not have any parts that can be maintained by the user, do not attempt to disassemble, refit and repair, the repair service of this product is only provided by our company and our company authorized dealer repair.

1.3 Safety Precautions (Please observe the following when using this product)

- Do not use this instrument to observe human or animal body.
- Do not use or store in places with explosive, strong electromagnetic field or combustible gas, which may cause fire or explosion.
- Do not allow the detected material to work under the condition of live, so as not to cause electric shock.
- Do not contact the end of the lens directly during use, especially pay special attention to the use of the endoscope in a high temperature environment.
- Contact with the ends at this point may cause burns.
- Do not look at the strong light source from the LED at the end of the endoscope probe close to avoid the impact of strong light on vision.
- Do not bend, stretch, twist or roll the probe line too hard, otherwise it may cause damage to the equipment.
- Long-term use of this product will cause stains on the lens objective lens, resulting in blurred picture and affecting data collection.
- Wipe the objective lens clean with alcohol or acetone before use.
- If you feel any abnormality in the Angle adjustment operation, stop the current operation and shut down. Then contact the supplier.
- Keep tube away from any liquids except water, salt water, oil, and light oil.
- After the instrument is used up, please clean the front section of the insertion tube of the instrument in time to prevent corrosion.

2. Video Observation Glass Product Introduction

2.1 System parameters

Bending control	360°full direction articulation
Insert tube	Four layer tungsten wire braided hose
System language	Chinese, English, Russian etc 8 languages
Screen size	5 inch HD LCD screen
Image/Video/File format	JPEG/AVI
Host structure	Integrated handheld design
Storage	Standard 32GB TF card, Max support 128G
Data port	Micro-USB port, HDMI video output port
IP Grade	Insert probe IP67
Host working time	≥4 hours
System weight	≤ 0.8kg (with battery)
Power	Removable rechargeable lithium battery
Power adapter	DC5V
Warranty	1 year

2.2 Operating environment

Host system working temperature	-10°C~50°C
Video probe working temperature	-20°~80°C, Below 0°,Steering operations should be reduced
Storage temperature	-20°C~60°C(Host)
Relative humidity	Max 90%,no condensation

2.3 Packing List

Series Number	Description	Number	Unit
1	Host	1	PCS
2	Endoscope Probe	1	PCS
3	Card reader	1	PCS
4	TF card(32G)	1	PCS
5	Battery	1	PCS
6	Packing cast	1	PCS
7	Charging adapter	1	PCS
8	Micro USB cable	1	PCS
9	HDMI cable	1	PCS
10	User Manual	1	PCS
11	Certificate card	1	PCS
12	Warranty card	1	PCS

3. Operating procedures

3.1 Take out the instrument:

Open the outer box of the instrument, take out the endoscope host and hold the probe tightly to avoid collision and scratching probe head.

3.2 Preparation for startup:

Load the battery and insert the tf card.

3.3 Press the power button to start the machine.

3.4 Use of endoscope:

Insert end of endoscope tube into the product under test.

3.5 Angle operation:

operate the joystick to control the bending of the probe according to the requirements of field testing.

If the rocker suddenly encounters great resistance during shaking, or if there is any abnormality during the operation of the endoscope, please click Stop watching immediately. After shaking the rocker to the middle position, carefully remove the endoscope insert end from the inside of the product under test.

3.6 Exit:

Make sure that the endoscope is bent in a roughly flat position (the rocker is in the middle position), and then slowly move it to exit.

3.7 After use:

turn off the power switch, put the endoscope into the portable box, and coil the inserted tube. (e.g., for a long time no use instrument, please remove the battery).

4. Operation guide

4.1 Preparation before starting up

Take out the endoscope and insert the TF card. The probe should be used as straight as possible. Probes are prohibited from winding.

4.2 Bending control

The endoscope bending angle control is directly controlled by the rocker on the operation panel, and the direction of the rocker swing is probe. The direction of head rotation and the size of the corner is determined by the angle at which the joystick is shaken.

4.2.1 Buttons, Interface Introduction

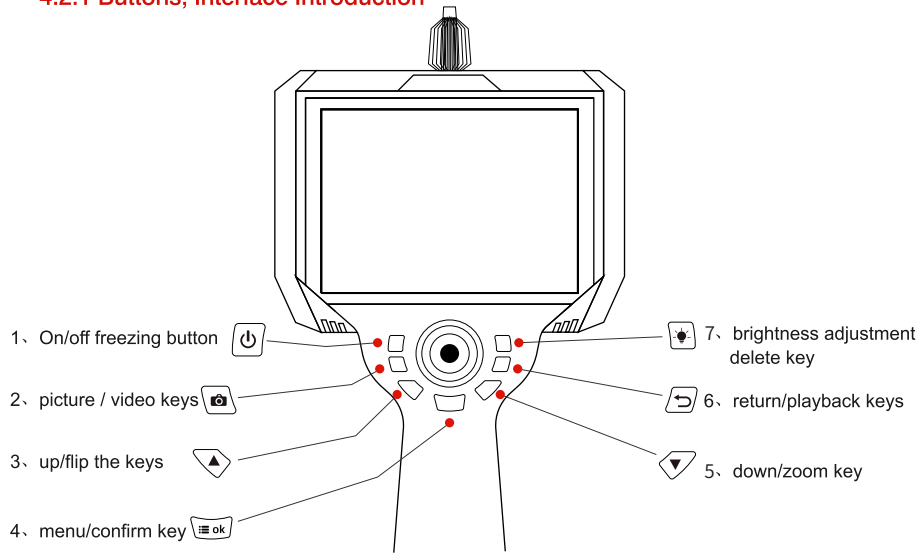


Figure 1

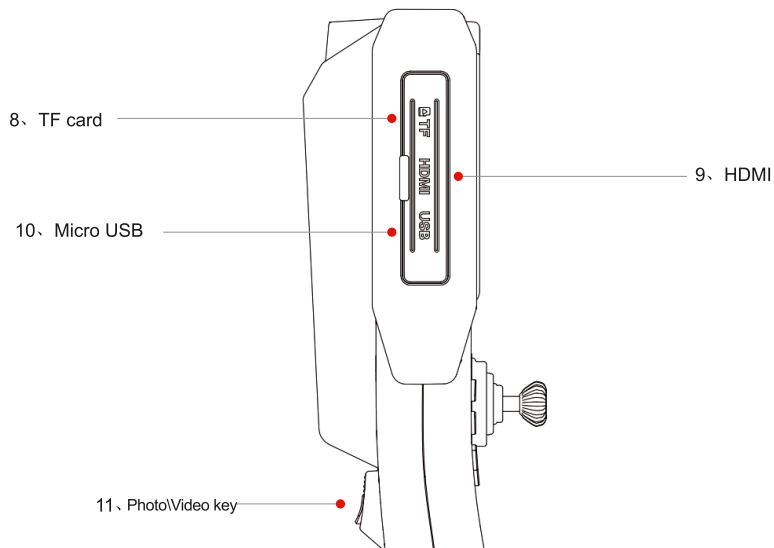


Figure2 Interface diagram

4.2.2 Take off the instrument

- 1 On/off/screen freeze button: power on, power off function, long press power on or off. In the preview state, press as Screen freezing function.
- 2 Photo \ Video button: When the photo icon is displayed in the upper left corner, press the button to take a photo, long time switch to video mode, short Press for video recording; Long press to loop between taking photos and recording.
- 3 Up \ Flip key: it is the function of navigation up when setting the interface; Rotate function when preview interface.
- 4 Menu/Confirm button: press the button to enter the setting interface when previewing the interface; The Confirm button is set on the Settings screen.
- 5 Down/Zoom key: in the preview interface, it acts as a cyclic zoom key; When setting up the interface, go down as a menu navigation.
- 6 Return/playback keys: When previewing the interface, enter the photo and video browsing folder; Go back in the browse screen function.
- 7 When the system is started up, the system is in the lighting state by default. At this time, the brightness level is 0, successively press the "LED light brightness adjustment" button. The brightness of the LED light increases gradually: 0, 1, 2...9, after the brightness of the LED light increases to 9, press the button again, the brightness of the LED light becomes 0, and so repeating.
- 8 TF card: external storage use; Maximum support 128GB.
- 9 HDMI: external use of large screen.
- 10 Micro USB: used for data transmission and charging function.
- 11 Photo/Video button: When the small dot icon is displayed in the upper left corner, short press to take a photo, long press for 3 seconds to enter the video recording mode, in video mode, short press to take photo function, long press for 3 seconds to return to video mode and save video files.

4.3 Storage and record files

Method 1: PC directly reads the TF card data. Take out the TF card from the TF card slot of the industrial borescope and insert it into the PC

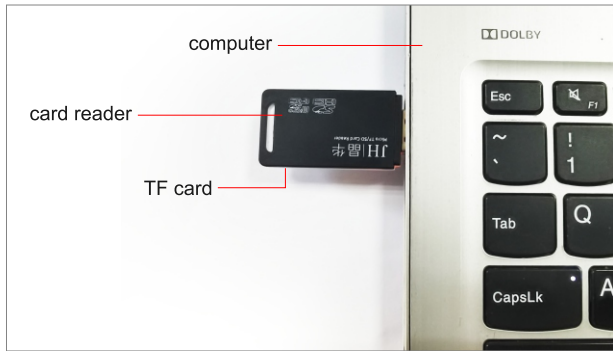


Figure 3

Method 2: Connect directly through the USB data transmission line, and the industrial-borescope enters the USB mode. In USB mode, do not pull out the TF card at will, otherwise it will cause abnormal errors.

As shown in Figure 4

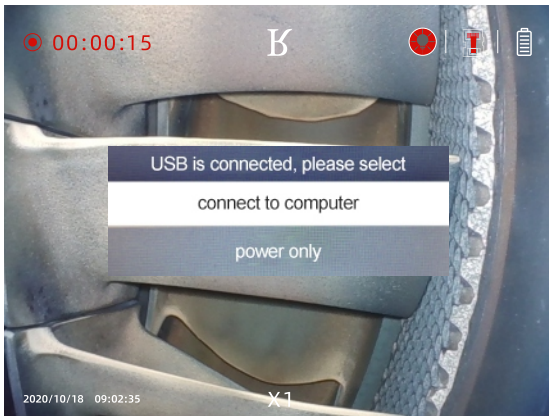


Figure 4

4.4 Scope Work Mode Quick Start Guide

The video observation mirror system mainly has 3 working modes, namely: "real-time preview mode", "photo video browsing mode" mode", and "system setting mode". After booting, it will enter the "real-time preview mode" by default. Each mode and sub-mode Please refer to "Table 1 Button Function List" for details of the button functions in the mode.

Key function list

Key shape	Name	Browsing interface	Browsing	Play video	System setup	Time setup
	Switch image freezes	Shutdown/screen off image freezes	Long press to power off	Long press to power off	Long press to power off	Long press to power off
	Up key rollover key	Image flip	Navigate up	Navigate up	Navigate up	Navigate up
	Down arrow zoom key	Image scaling	Navigate down	Navigate down	Navigate down	Navigate down
	Menu confirmation key	Enter menu	Confirm	Confirm	Confirm	Confirm
	Back/Playback key	Photo video browsing	Return	Return	Return	Return
	Brightness adjustment delete	Bright adjustment	Delete	Delete	\	\
	Photo/Video key	Photo/Video	Return	Return	Return	Return
	Photo/Video key	\	\	\	\	\
	Joystick	Joystick UP:Probe swings up				
		Joystick Down:Probe swings down				
		Joystick Left:Probe swings left				
		Joystick Right:Probe swings right				

4.4.1 Preview interface

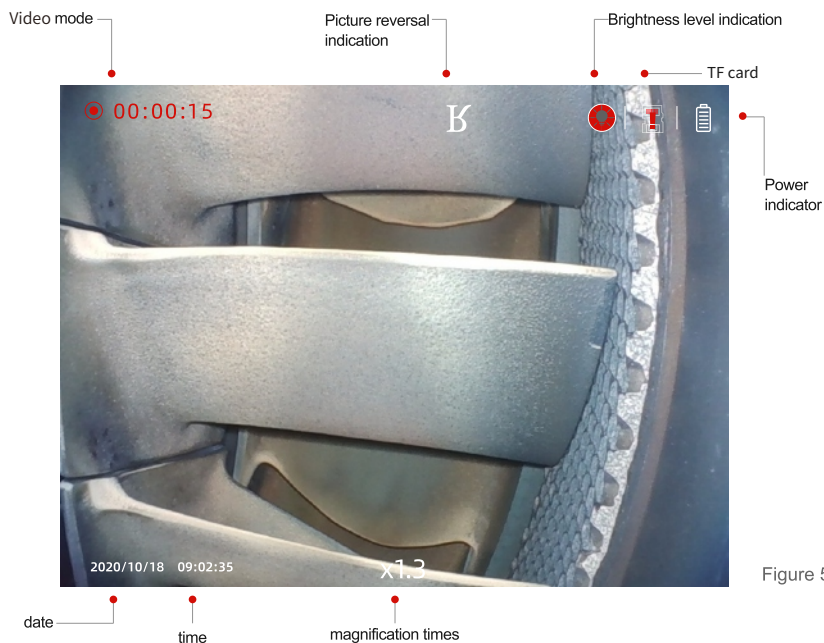


Figure 5

4.4.2 Photo/Video

Long press button to take video and turn off video.

Short press button to take photo.



Figure 6 Photo Mode



Figure 7 Recording Mode

4.4.3 Photo/Video Browse

Press the key the preview interface to enter the folder, you can preview photos and play videos online.

See figure 8~9

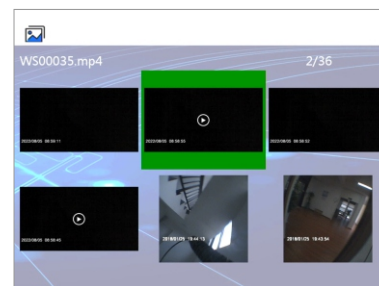


Figure 8 files

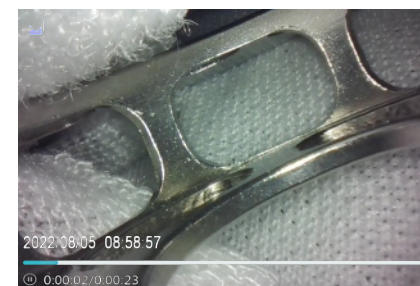


Figure 9 video playing

Press the button to delete a photo or video file, and the delete option can select a single file to delete or delete all of file.

See figure 10

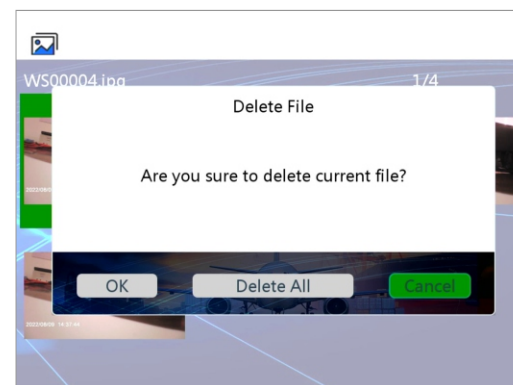


Figure 10 delete option setting

4.4.4 System settings

Press the key "OK" to enter the setting interface.

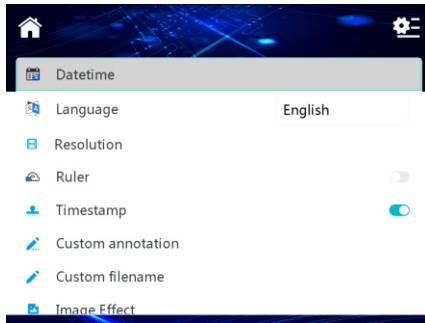


Figure 11 Set interface

4.4.5.1 Date/Time Setting:

In the setting interface, press up or down to enter the date and time setting page.

See figure 12

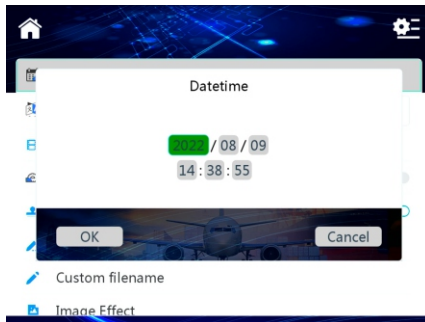


Figure 12 date time setting

Press the key number plus; Press the key to reduce the number, press the key to switch, set up after the completion of the menu Recognize the key to complete the current setting.

4.4.5.2 Language Settings

In the setting interface, press the up or down key to enter the language setting page.

See figure 13

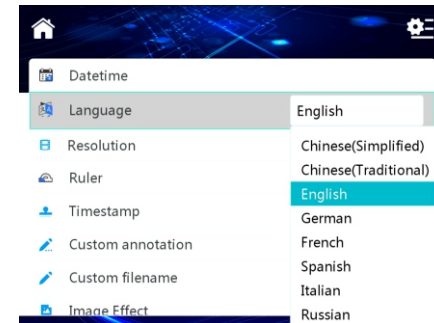


Figure 13 language settings

4.4.5.3 Time /watermark setting

In the setting interface, press the up or down key to enter the time watermark selection function, press the key to switch and confirm.

See figure 14

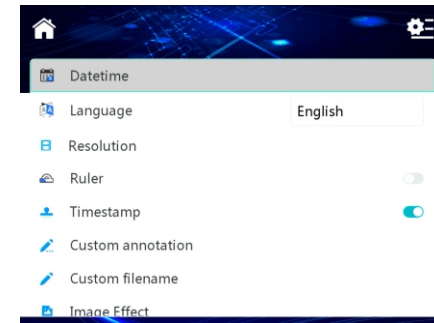


Figure 14 timestamp settings

When the time watermark is turned on, there will be a time watermark at the bottom of the photos and videos taken, and if it is turned off, there will be no time watermark.

See figure 15 16



Figure15. Turn on watermark



Figure16. Turn off watermark

4.4.5.4 Format memory card

Set the interface. Press up or down to enter the formatted memory card page, as shown in Figure 18. Press up Or down to choose whether to format the memory card, press the key to confirm.

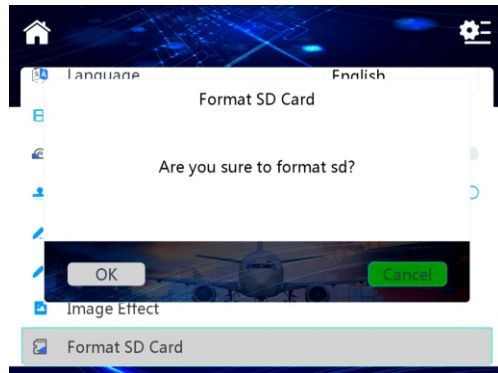


Figure17. Format

4.4.5.5 Custom Annotation

In the setting interface, press up or down to enter the custom annotation interface. Press the up or down key to select the letter to edit the custom annotation, and press the key to confirm.

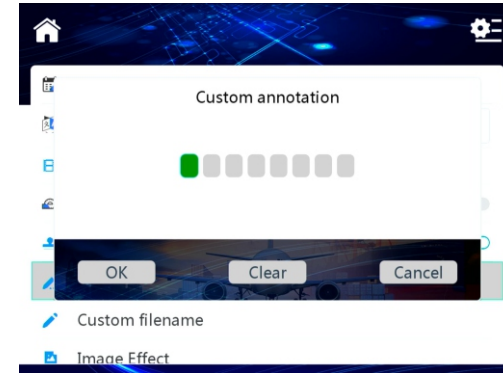


Figure 18 Custom Annotation

4.4.5.6 Image effects

In the setting interface, press the up or down key to enter the image effect interface. Press the up or down key to select the desired image effect, and press the key to confirm.



Figure 19 Image effects

4.4.6 File naming:

The naming rule is: custom prefix + serial number

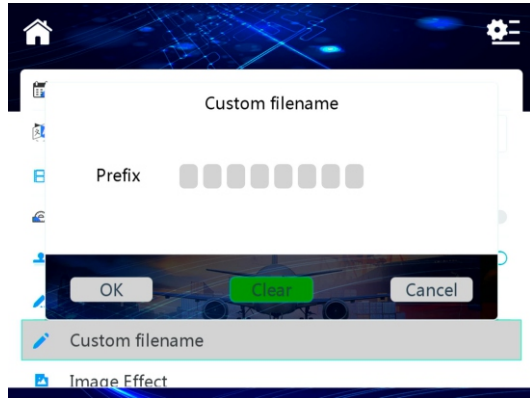


Figure 20 File naming

Note: TF card must be inserted before taking photos/recordings, otherwise the module will not be able to take photos and videos.


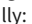
4.4.7 Battery status detection

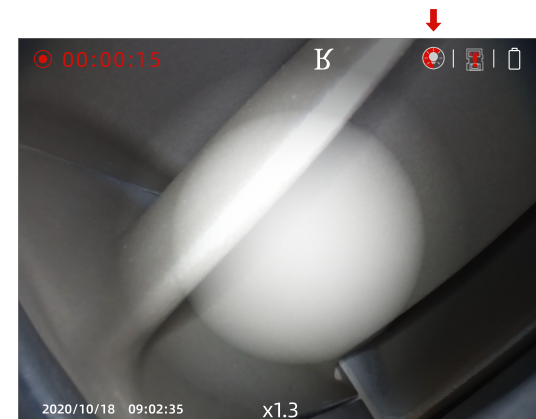
When the sight glass is running, the battery indicator icon on the upper right of the screen displays the real-time battery status (as shown in Figure 21). When the battery is too low to continue working, the battery indicator icon will turn to 0. At this time, the system will issue a low battery alarm and automatically shut down after 30 seconds.



Figure 21

4.4.8 Red/white light switch lighting state

When the system is started up, the system is in the lighting state by default. At this time, the brightness level is 0, successively press the "LED light brightness adjustment" button . The brightness of the LED light increases gradually: 0,1,2...9, after the brightness of the LED light increases to 9, press the button again , the brightness of the LED light becomes 0, and so repeating.



Brightness level adjustment

5 . Turn off the instrument

Press the power off button for 3 seconds to complete the shutdown.

6 . Instrument storage mode

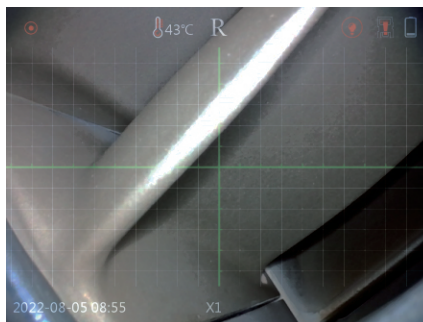
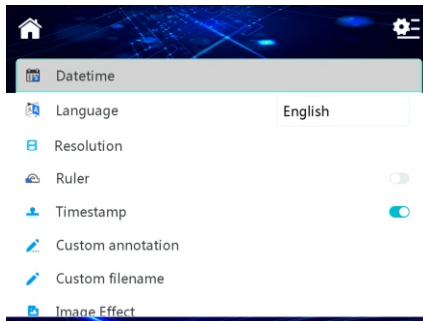
- 1. Please use a clean cloth or dry soft towel for cleaning.
- 2. If you do not use it for a long time, please take out the battery.
- 3. It is strictly prohibited to store the instrument in high tempera - ture, bright light, high dust, pollution or corrosive environment.

7 . Troubleshooting

Malfunction	possible reason	Solution
Unable to start	No battery inserted	Charge or install the battery
Cannot adjust brightness	Low battery	Charge or replace the battery
Automatic shut-down	Low battery	Remove battery, reinstall and restart, charge
Image cannot be recorded	Card Capacity is insufficien	Replace cards or delete unwanted pictures

4.4.9 Measurement function

Go to the system settings, turn on the ruler switch, you can turn on the measurement function



GMGA MEASURING
 No. 33 Alley 99/120 Dinh Cong Ha, Dinh Cong Ward, Hoang Mai District, 10000 Hanoi City, Vietnam
 Telephone: +84 845 969 336
 Email: info@gmga.vn
 Website: <https://gmga.vn/>
 © 2023 GMGA MEASURING