

CY SERIES



2D Measurement



CY SERIES

Intelligent industrial endoscope

CY Intelligent industrial endoscope is equipped with 5 inch industrial grade touch LCD screen, double operation of the touch button; mega pixel to restore real image color; with achieve comparative measurement method, automatic identification of defects, WiFi remote Unicom, double view integrated screen display, intelligent editing pictures and other functions. Customized; suitable for aircraft engine turbine blades, burning chamber cracks, finding exclusion and exclusion of excess objects inside the body structure framework, various types of oil pipe welding, etc. Detection of components, nozzle components and other parts;

Point to Line •

Area measurement function

Real time network • connection

Support WIFI5G function
(Optional)

2 USB ports •

VGA video output
point to point

5.7 inch •

Industrial grade
touch LCD screen

• Adopt adaptive noise reduction technology

To capture highdefinition still pictures

• Support External mouse

Keyboard input

• Built in 64G SSD

To prevent data loss



Product technical parameters

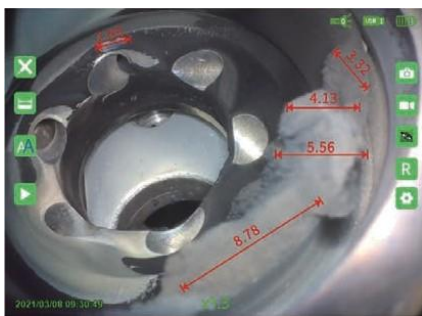
| Host | |
|--|---|
| Display | 5.7" Industrial grade touch LCD screen |
| Audio | 3.5mm earphone/microphone jack |
| Dimension | 360*160*60mm |
| Output | VGA video output(Dual screen synchronous display), dual USB output port |
| Storage | 64GB SSD and can be expandable up to 512GB |
| Power | Special rechargeable lithium battery pack, online charging, Working time \geq 4 hours |
| IP Grade | Host IP54, Probe IP67 |
| Operating temperature of the host system | -20°C~70°C, Low temperature without preheating (customized-40°C~85°C) |
| Storage Temperature | -20°C-80°C |
| Relative Humidity | Max 95%, No condensation |

| Camera Probe | |
|----------------------------|--|
| Probe Diameter | 0.95mm-8mm |
| Pixel | 1.0MP/450,000 pixels/160,000 pixels |
| Length | 1.7m(other customized) |
| Articulation | 360° all way articulation |
| Max swing head Angle | > 180° |
| DOF | 3~40mm/5~100mm/10~200mm/50mm~ infinity |
| FOV | 90°-140° |
| View direction | Front, side, dual view(Dual screen synchronous display) Front and side switched |
| Illumination | Rear high power LED fiber optical transmission |
| Brightness of Illumination | Up to 100000+lux |
| Operating Temperature | -20°C 80°C |

| System / software | |
|----------------------|--|
| Image / video format | Image:JPEG(JPG), Video:MP4 |
| Image control | With freeze, zoom, photo, flip, video playback, analog ruler functions |
| System language | Chinese (traditional), English and other seven language functions |



/Comparative Measurement



Measurement by comparison method: the unknown quantity is detected by a known standard quantity for measurement purposes, and the value of the 0.01mm margin is marked.

02 /Automatic Identification of Defects (Optional)



Common endoscope visual detection mainly relies on manual **discrimination of** defects, which is inefficient and leads to misjudgment or side inspection. Customized automatic detection and defect identification system can improve detection efficiency.

03 /Remote Connectivity



Wifi can be used to realize remote connectivity, and the video scenes being tested can be shared with off-site experts for communication and diagnosis, so as to improve detection efficiency and realize multidirectional collaborative remote service functions.

/Multiple pipeline options



Lens protector



Side view lens

Front view 

side view

Front Side dual view

Replaceable probe 

A variety of lenses and pipelines meet diPerent needs. Optical lenses can be adapted to direct and side view replaceable lenses to meet the needs of actual detection applications.

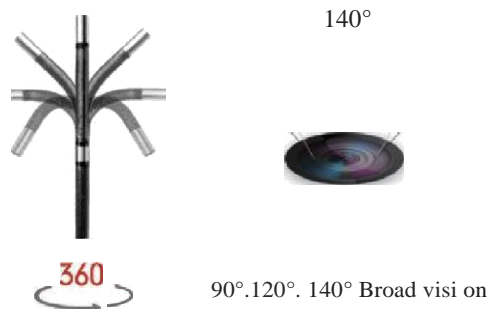


/Smart Editing Pictures



The watermark can be named in Chinese and English, which is convenient to trace the defect brush marks and facilitate the classification of the later detection values.

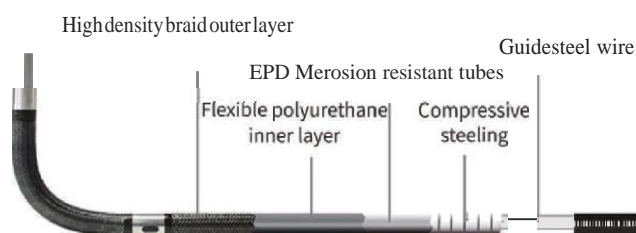
07/Free Rotation



\$dM/The Same Screen Display



Two million HD cameras, direct and side view, real-time display of dual perspective images on the same screen, completely solve the multidimensional simultaneous detection of pain points, improve detection efficiency.



Wear-resistant fourlayer tungsten wire weave, 360° omnidirectional swing

CY6 Series Model

| Model | Tip Dia. | Length | Articulation | Camera Pixels | Bend Angle | Side View for Option |
|-----------|----------|--------|--------------|---------------|------------|----------------------|
| CY6-1200 | Ø1.2mm | 1M | Non | 40000 | | Non |
| CY6-1201 | Ø1.2mm | 2M | Non | 40000 | | |
| CY6-18002 | Ø1.8mm | 3M | 2 way | 160000 | 180° | |
| CY6-18012 | Ø1.8mm | 1M | 2 way | 160000 | 180° | |
| CY6-24012 | Ø2.4mm | 2M | 2 way | 160000 | 180° | |
| CY6-24022 | Ø2.4mm | 3M | 2 way | 160000 | 180° | |
| CY6-28014 | Ø2.8mm | 1M | 360° | 160000 | 180° | Yes |
| CY6-28024 | Ø2.8mm | 2M | 360° | 160000 | 180° | |
| CY6-28034 | Ø2.8mm | 3M | 360° | 160000 | 180° | |
| CY6-39014 | Ø3.9mm | 1M | 360° | 1mega | 180° | |
| CY6-39024 | Ø3.9mm | 2M | 360° | 1mega | 180° | |
| CY6-39034 | Ø3.9mm | 3M | 360° | 1mega | 180° | |
| CY6-60014 | Ø6.0mm | 1M | 360° | 1mega | 180° | Dual View Option |
| CY6-60024 | Ø6.0mm | 2M | 360° | 1mega | 180° | |
| CY6-60034 | Ø6.0mm | 3M | 360° | 1mega | 180° | |



GMGA MEASURING

Address: No. 33 Alley 99/120 Dinh Cong Ha, Dinh Cong Ward, Hoang Mai District, 10000 Hanoi City, Vietnam

Telephone: [+84 845 969 336](tel:+84845969336)

Email: info@gmga.vn

Website: <https://gmga.vn/>