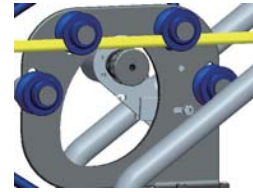


# Pipe Inspection Camera System Operation Manual

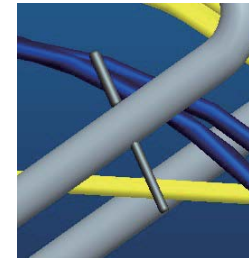
## 1 Cable Holder



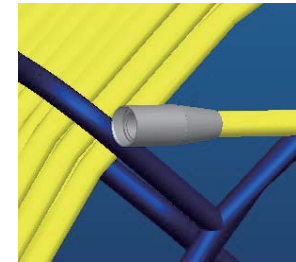
Put the cable into wheel, adjust 4 wire wheels to clamp cable to the best position, then tighten the wire wheel nut.



Brake wrench of withdraw cable wheel, clockwise to lock the wheel, counterclockwise to release brake



Wire wheel nut adjusting rod



camera connect port



A

B



C

D

## 2 The system connection



## Manual

Thank you for purchasing our products, please read this instruction manual carefully so that to use and protect machine correctly. After reading the instructions, please keep this manual in a safe and easy-to-access place for future reference.

### 3 Camera

25MM diameter camera

- 1-Connector
- 2-Spring
- 3-Night vision light
- 4-lens
- 5-45mm bracket
- 6-125mm bracket



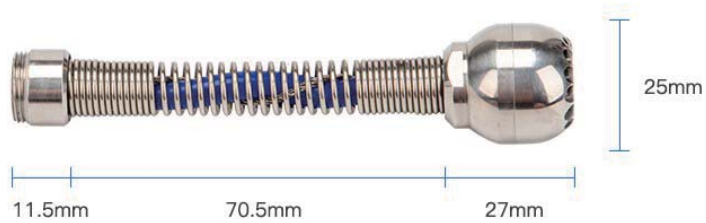
HD1080P



with 12pcs night vision light



Waterproof (IP68)



25mm



46mm



125mm

### 50MM diameter camera

- 1Connector
- 2Spring
- 3Night vision light
- 4lens
- 5-85mm bracket



## WITH SELF LEVELING CAMERA



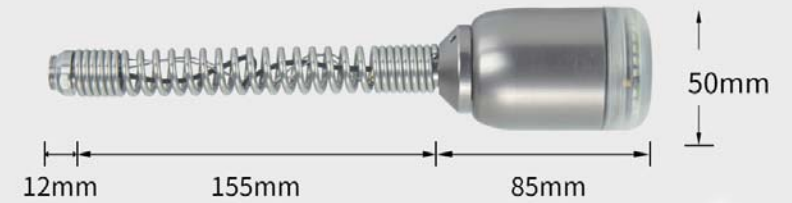
HD1080P



with 24pcs night vision light



Waterproof (IP68)



## With 24pcs Night Vision Light



φ50mm



φ85mm

## 7. Packing List



A



B



C



D