

Two Way ArticulationProbe

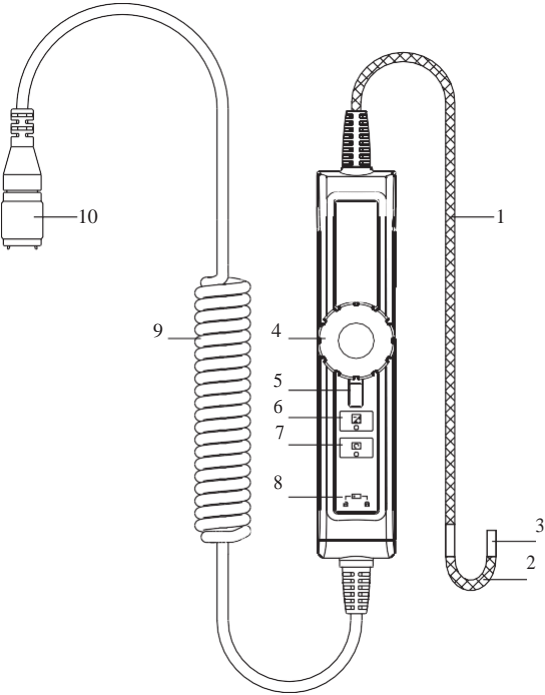
User Manual



Contents

Product Outlook.....	4
Getting Started.	6
Operations.	7
Function buttons.....	8
Specifications.....	9
Cautions for use.....	10

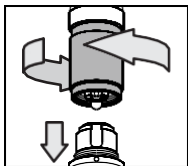
Product outlook



1. Probe - To guide camera head to inspection area.
2. Bending Neck - To bend camera to change view angle.
3. Camera Head - Lighting and image capture.
4. Control Wheel - To adjust bending neck angle.
5. Control Wheel shaft lock - To lock bending neck angle.
6. Boost button - To enhance brightness for dark environment inspection.
7. Image rotation button - Four 90° image rotations to identify codes.
8. Lock - To lock up button functions.
9. Connecting Cable
10. Connector

Getting started

Step1: Connect Articulation probe to main system with align dot then tighten the screw nut.



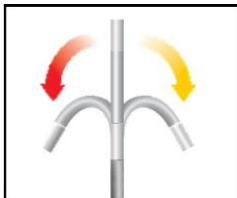
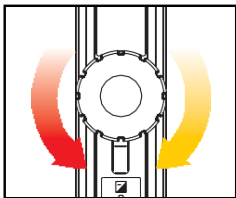
Step2: Turn on the system until the image is displayed.

Step3: After the system is turned on, you can start your inspection.

Operations

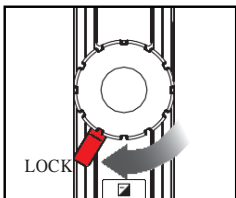
Articulation

Rotate the control wheel clockwise to bend tip right, counter clockwise to bend left.



Lock

To fix bending neck angle, just switch the lock shaft clockwise to the lock position.



Function buttons


 Boost button



*live image



* boost

 Image rotation button



Specifications

4.5 mm Two Way Articulation Probe

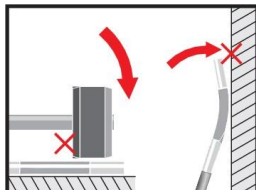
Probe head diameter	4.5mm
Probe head length	13mm
Probe length	1.5m, 3m
Articulation angle	right-left 180° (*)
Probe head material	Stainless steel
Probe material	Outer braided Stainless steel
Light source	5 x white LEDs
FOV	90°
DOF	1cm~10cm
Button	Boost, image rotation
Working temperature	-10°C~60°C
Storage temperature	-10°C~60°C
Resolution	640x480
Applicable systems	F series

*The maximum articulation angle may be degraded due to the bending loop of the tube.

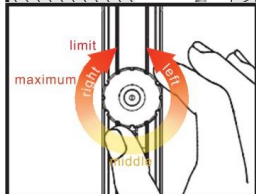
Cautions for Use

- To avoid danger, do not put the insert tube into any flammable liquid or gas.
- The insert tube contains a series of small wires that control the optics and electronics of the camera tip. To ensure reliability, do not bend the insert tube more than 90°, and always keep the insert tube in a large arc as possible for storage.
- This product is designed for industrial use only. Do not use the system for human or any other biological inspection.
- Do not use any corrosive liquid for cleaning, such as alcohol.
- Do not try to disassemble the product, it might cause damage or electric shock.
- Please use only recommended components or accessories, unapproved accessories and components may cause damages.
- Avoid direct sun exposure and store the system in a cool, dry and well-ventilated place.
- In order to protect camera module, be sure to have a thread protective ring on the top of camera head if no accessories are used.

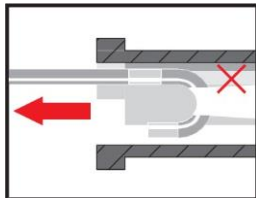
Bending neck is composed with precision components, DO NOT put under heavy load on this.



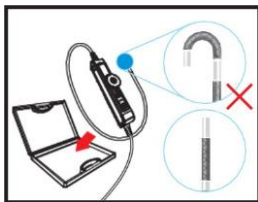
DO NOT rotate the wheel when it is at the maximum angle.



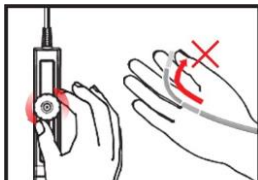
Never use the bending neck as a HOOK.



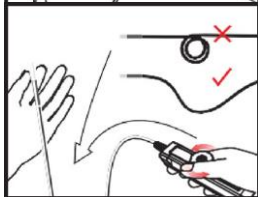
Please straighten the bending neck everytime before storage.



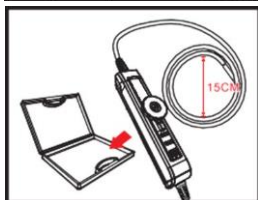
NEVER bend the bending neck with hand, operate by control wheel only.



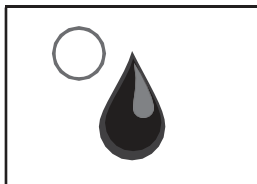
Please keep the insert tube straight while in use.



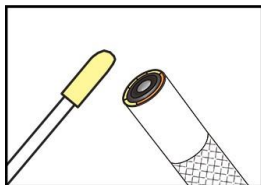
DO NOT bundle the insert tube less than 15cm circle while not in use.



Liquid immersion passed:
unleaded gasoline, diesel,
machine oil, brake oil,
transmission oil, and water.



Use cleaning liquid and swab
provided in the cleaning kit for
camera head cleaning.



NOTE



GMGA MEASURING

Address: No. 33 Alley 99/120 Dinh Cong Ha,
Dinh Cong Ward, Hoang Mai District, 10000
Hanoi City, Vietnam

Telephone: [+84 845 969 336](tel:+84845969336)

Email: info@gmga.vn

Website: <https://gmga.vn/>



